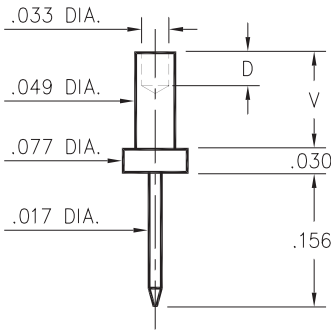


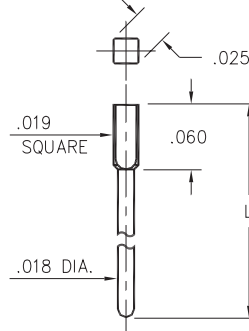
### 3116



Basic Part Number	Board Thickness	Length V	Length D
3116-1	.031	.051	.035
3116-2	.062	.082	.062
3116-3	.094	.113	.062
3116-4	.125	.145	.062

**3116-X-00-XX-00-00-08-0**  
Swage mount in .052 hole

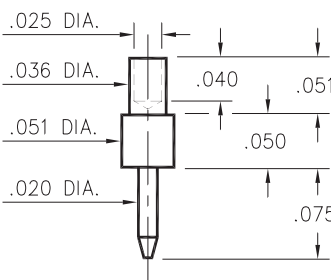
### 5435



Basic Part Number	Length L
5435-0	.303
5435-1	.200
5435-2	.413

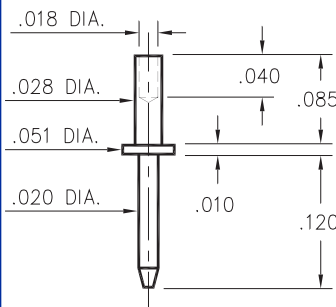
**5435-X-05-XX-00-00-03-0**  
Square press-fit in .022 plated thru hole

### 3135



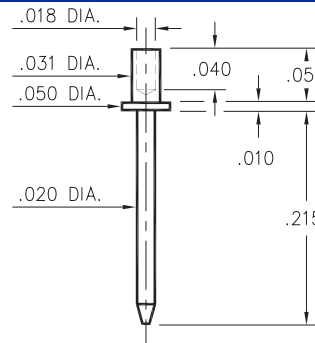
**3135-1-00-XX-00-00-08-0**  
Swage mount in .040 hole.  
For .031 thick board.

### 3210



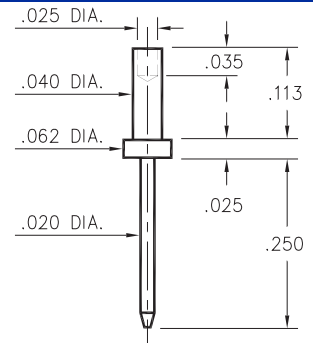
**3210-2-00-XX-00-00-08-0**  
Swage mount in .031 hole.  
For .062 thick board.

### 3129



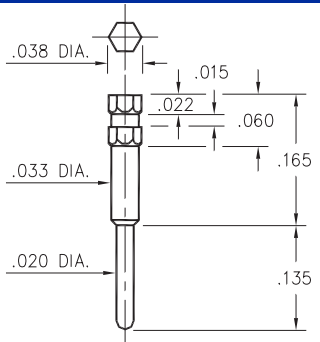
**3129-1-00-XX-00-00-08-0**  
Swage mount in .035 hole.  
For .031 thick board.

### 3147



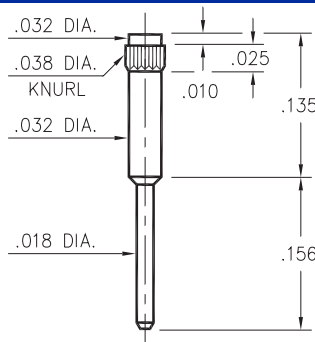
**3147-3-00-XX-00-00-08-0**  
Swage mount in .043 hole.  
For .094 thick board.

### 4366



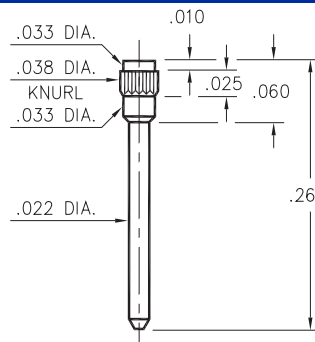
**4366-0-00-XX-00-00-03-0**  
Hex press-fit in .034 plated thru hole

### 1267



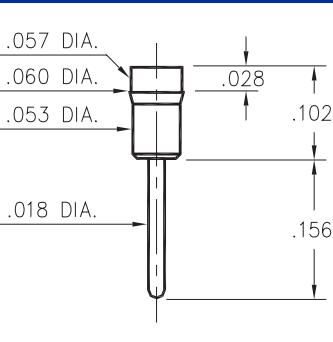
**1267-0-00-XX-00-00-03-0**  
Press-fit in .035 mounting hole

### 7827



**7827-0-00-XX-00-00-03-0**  
Press-fit in .035 mounting hole

### 1130



**1130-0-00-XX-00-00-03-0**  
Press-fit in .057 mounting hole  
Pin material is Ph Br. 544 (B2)

#### SPECIFICATIONS

**PIN MATERIAL:**  
Brass Alloy 360, 1/2 Hard  
(Except Swage pins which are annealed)

**DIMENSION IN INCHES**  
**TOLERANCES ON:**  
LENGTHS: ±.005  
DIAMETERS: ±.002  
ANGLES: ± 2°

**ORDER CODE: XXXX - X - 0X - XX - 00 - 00 - 0X - 0**

**BASIC PART #**

**SPECIFY PIN FINISH:**  
01 200µ" TIN/LEAD OVER NICKEL  
80 200µ" TIN OVER NICKEL  
15 10µ" GOLD OVER NICKEL  
21 20µ" GOLD OVER NICKEL  
34 50µ" GOLD OVER NICKEL

